

# HELP STOP THE SPREAD OF GERMS

Help prevent the spread of respiratory diseases like COVID-19.

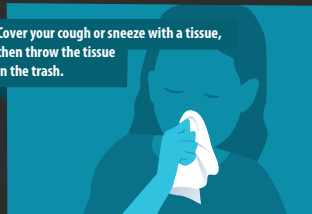
Avoid close contact with people who are sick.



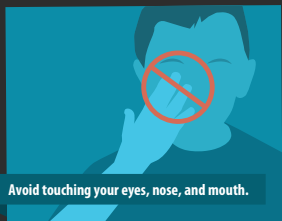
Stay home when you are sick, except to get medical care.



Cover your cough or sneeze with a tissue, then throw the tissue in the trash.



Avoid touching your eyes, nose, and mouth.



Wash your hands often with soap and water for at least 20 seconds.



Clean and disinfect frequently touched objects and surfaces.



For more information: [www.cdc.gov/COVID19](http://www.cdc.gov/COVID19)

CS314915-A

## Stop Germs! Wash Your Hands.



**Wet** your hands with clean, running water (warm or cold), turn off the tap, and apply soap.



**Lather** your hands by rubbing them together with the soap. Be sure to lather the backs of your hands, between your fingers, and under your nails.



**Scrub** your hands for at least 20 seconds. Need a timer? Hum the "Happy Birthday" song from beginning to end twice.



**Rinse** hands well under clean, running water.



**Dry** hands using a clean towel or air dry them.

**Keeping hands clean is one of the most important things we can do to stop the spread of germs and stay healthy.**

LIFE IS BETTER WITH

**CLEAN HANDS**



[www.cdc.gov/handwashing](http://www.cdc.gov/handwashing)



This material was developed by CDC. The Life is Better with Clean Hands Campaign is made possible by a partnership between the CDC Foundation, GOU, and Staples. HHS/CDC does not endorse commercial products, services, or companies.

CS310027-A



# WELCOME BACK!

Here are some precautions we're taking for your health and wellness as we return to safe gaming.



# Safely enjoy the action and excitement of Quil Ceda Creek Casino.

The safety, health and well-being of our guest and team members has, and always will be, our first priority.

Daily deep cleaning procedures have been increased on the casino floor and throughout the entire property. Hand sanitizer stations are readily available and we are enforcing social distancing by limiting the number of guests.

We are strictly following the CDC's guidelines so things may look and feel a little different around the property. Here are some things you can expect:



## AS YOU ARRIVE:

- **Limited entrances** will be accessible in order to maintain an accurate guest count.
- **Before entry** a touchless temperature check will be conducted.
- **A properly worn face mask will be required** for all guests entering any Tulalip property.
- **Limited guests** will be allowed inside the property at one time.

## AROUND THE PROPERTY:

- **All guests must comply with our 100% no smoking or vaping policy** outside designated smoking areas.
- **Plexiglass shields** have been installed in high traffic areas where appropriate.
- **Additional hand sanitizers** have been placed throughout the property and by slot banks for your convenience.
- **All team members will be required to wear face masks** while they are on shift.
- **Limited guests** will be allowed inside the property at one time.
- **Reduced seating capacity and spacing** will be available in open public spaces in accordance with healthy social distancing.

## THE GAMING FLOOR:

- **Enhanced disinfectant cleaning procedures** will be administered frequently throughout shifts.
- **All machines will be disinfected regularly**, including attendants offering to sanitize machines for guests as they play.
- **Congregations or crowds of guests will be dispersed** in order to follow social distancing guidelines.

## TABLE GAMES:

- **Limited seating and games** will be available to allow for proper social distancing.
- **High-touch gaming items will be routinely disinfected.** Cards will be refreshed more frequently.

## ENTERTAINMENT:

- **All Qzone entertainment** has been canceled until further notice.

## THE RESTAURANTS:

- **Table configurations, barstools and seating have been adjusted** to allow for proper social distancing.
- **We will be maintaining a contact tracing log.**
- **High-touch items will be cleaned and disinfected between guests**, or replaced with disposable versions.
- **Self-serve items**, such as condiments, will be provided in individual packets.
- **Refills will not be provided for self-supplied beverage containers.**
- **Bars that allow for proper social distancing will be open**, and all surfaces will be sanitized frequently.

**If you have any questions or concerns, ask a team member for assistance.**



# OPEN 24 HOURS EVERY DAY!

FIND ALL OF THE LATEST UPDATES AND INFORMATION ONLINE AT:  
**QCCASINO.COM**



# 100% NO SMOKING OR VAPING

SMOKING WILL BE ALLOWED IN  
DESIGNATED AREAS ONLY.